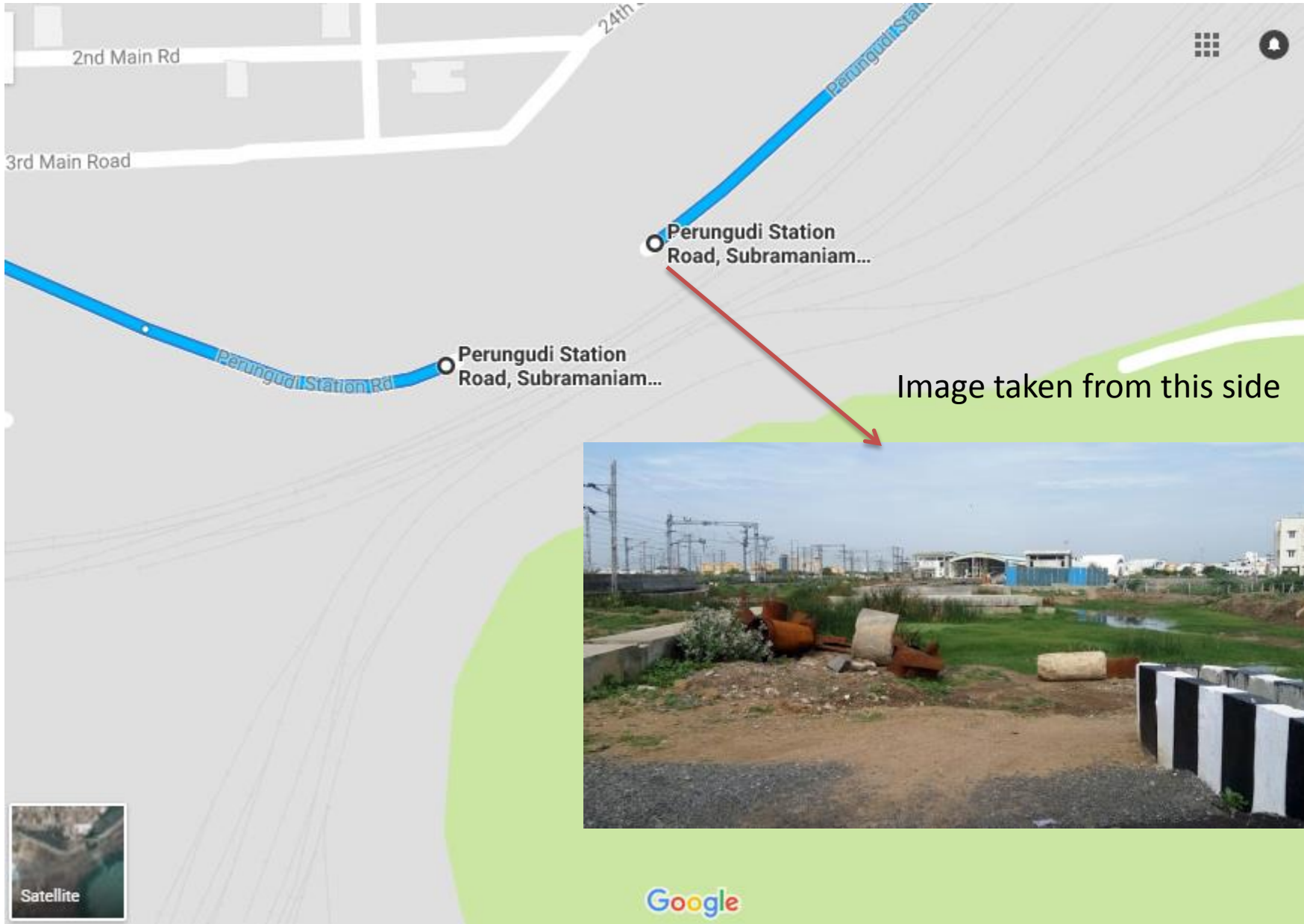


## Perungudi station road- Incomplete location

I need to understand the reason behind why the Perungudi station road has been incomplete for the past 6 months. This Perungudi station road is connecting Perungudi suburban railway station and Velachery sub urban railway system in Chennai. This road is connecting Velachery medavakkam road to Perungudi railway station, is been full laid at start and end, where as a canal which has passing in between is not connected for approximately 20 feet distance. If this road is been used it can reduce traffic and save 3 km for commuters. We not able to use this road even it is been laid off and sincenot joined in between. It is clearly visible that government has spent few crores to start the road, but still is been idle and not used for public. Now it is been blocked by local private people's and they are using it for personal use. It was made actually alternate route for Velachery to Taramani and Sholinganallur, but because of this it is been taking lot of hour since this is been not used. We are in position to local roads and some two wheeler's and four wheeler's are travelling with risk in the road's platform. Kindly request information on this.

# Perungudi station road- Incomplete location



## Embedded map location

- <https://www.google.co.in/maps/dir/12.9688315,80.2243966/12.9735559,80.229388/12.9679374,80.2178615/@12.9698761,80.218754,16z/data=!4m20!4m19!1m0!1m15!3m4!1m2!1d80.2215425!2d12.9685234!3s0x3a525d9783be2437:0x570a9cbe535a4e1b!3m4!1m2!1d80.2192456!2d12.9695049!3s0x3a525d9783be2437:0x570a9cbe535a4e1a!3m4!1m2!1d80.2192456!2d12.9695049!3s0x3a525d9783be2437:0x570a9cbe535a4e1a!1m0!3e0>

# Map location- Short URL

<https://goo.gl/maps/79t1Zp6e6c22>

## Satellite map

<https://www.google.co.in/maps/dir/12.9688315,80.2243966/12.9735559,80.229388/12.9679374,80.2178615/@12.9697969,80.2214781,1246m/data=!3m1!1e3!4m20!4m19!1m0!1m15!3m4!1m2!1d80.2215425!2d12.9685234!3s0x3a525d9783be2437:0x570a9cbe535a4e1b!3m4!1m2!1d80.2192456!2d12.9695049!3s0x3a525d9783be2437:0x570a9cbe535a4e1a!3m4!1m2!1d80.2192456!2d12.9695049!3s0x3a525d9783be2437:0x570a9cbe535a4e1a!1m0!3e0>

# Satellite map image

